

# CooliMate<sup>®</sup> Insulated Shipper

CooliMate<sup>®</sup> thermal insulated shippers provide a high performance, money saving solution for shipping your temperature sensitive products.

## High Performance Insulation

The robust material reflects up to 97% of heat transferred via radiation (sun, heat) and reflects up to 97% of the cold air back into the product and its surrounding space.

## Low Tare Weight

CooliMate thermal insulated shippers have a lower tare weight than other temperature controlled packaging solutions, because of this we are able to pass shipping savings onto our customers

## Size Matters

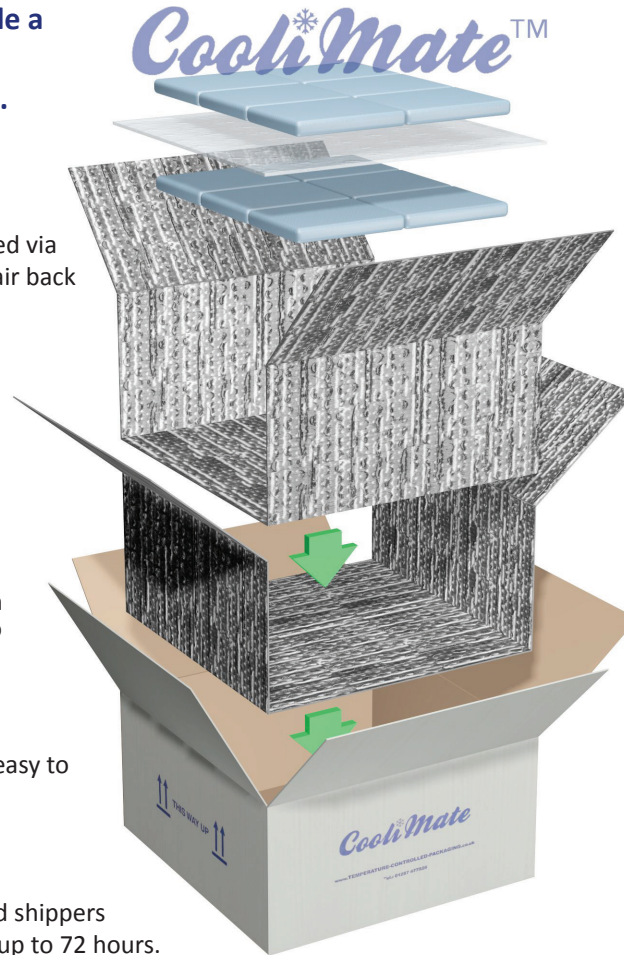
When it comes to shipping, size really does matter. With that in mind we created a wide range of sizes to cater to many customers needs.

## Quick Assembly

All Coolimate thermal insulated shippers are quick and easy to assemble as illustrated to the right.

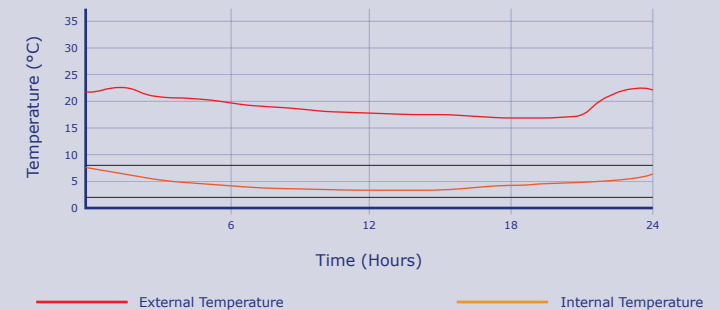
## Temperature Range & Duration

Test results show that our CooliMate<sup>®</sup> Thermal Insulated shippers will keep products below -2°C or between 2°C - 8°C for up to 72 hours.



System Name	External Dimensions (mm)	Internal Space (mm)	Payload (Litres)	Tare Weight (g)
CooliMate - 165	177 x 177 x 204	165 x 165 x 180	4.5	250
CooliMate - 250	262 x 262 x 224	250 x 250 x 200	12.5	375
CooliMate - 290	302 x 302 x 274	290 x 290 x 250	19	575
CooliMate - 360	372 x 372 x 324	360 x 360 x 300	36	950
CooliMate - 480	492 x 492 x 324	480 x 480 x 300	64	1497

## 24 Hour Test Results



## Insulation

Nominal thickness - 4mm

Foil Thickness - 8MY + 25MY PE

Density - 200 gr/m<sup>2</sup> (±5%)

Flame Resistance - B2

Anti-corrosion coating - NC lacquer



Temperature Controlled Packaging, Unit C-D Haslemere Industrial Estate, Tomlinson Road, Leyland, Preston, PR25 2DY UK

Email: [info@tcpkg.co.uk](mailto:info@tcpkg.co.uk) Telephone: 01772 331789