

CooliMate[®] Insulated Pallet Shipper



CooliMate[®] Thermal Insulated Pallet Shippers provide a high performance, money saving solution for shipping your temperature sensitive products.

High Performance Insulation

The robust material reflects up to 97% of heat transferred via radiation (sun, heat) and reflects up to 97% of the cold air back into the product and its surrounding space.

Size Matters

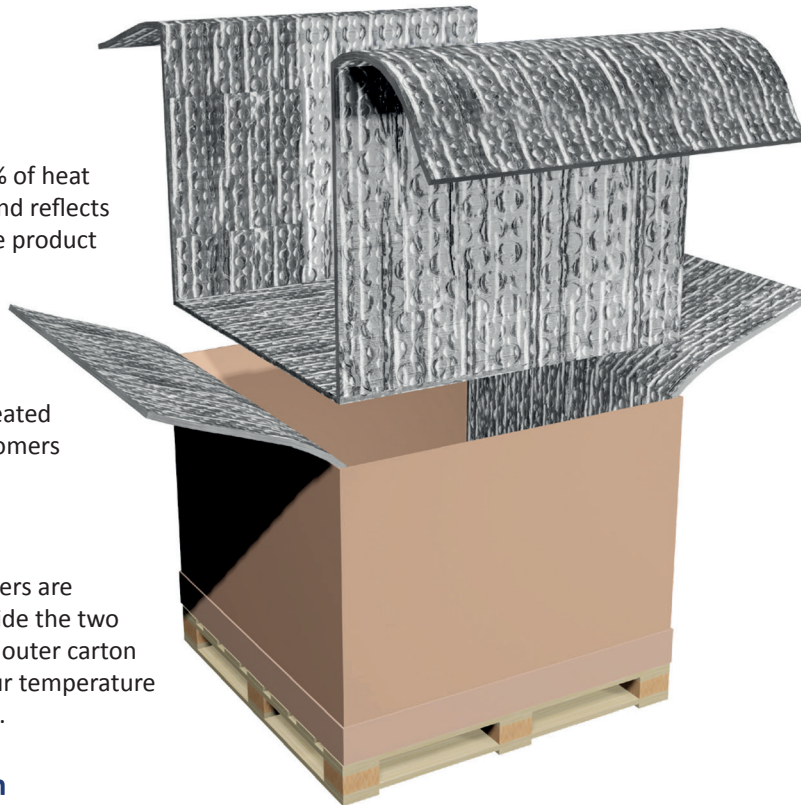
When it comes to shipping, size really does matter. With that in mind we created a range of sizes to cater to many customers needs.

Quick Assembly

All Coolimate thermal insulated shippers are quick and easy to assemble, Simply slide the two lengths of thermal insulation into the outer carton and the pallet shipper is ready for your temperature sensitive products to be placed inside.

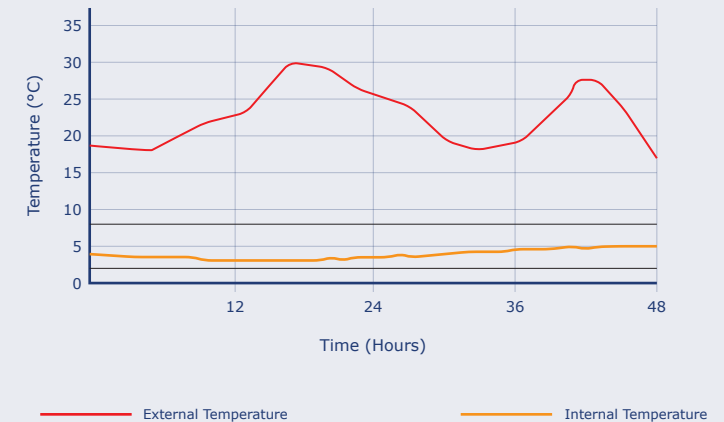
Temperature Range & Duration

Test results show that our CooliMate[®] Thermal Insulated Pallet Shippers will keep products between 2°C - 8°C for 48 hours.



System Name	External Dimensions (mm)	Internal Space (mm)	Payload (Litres)
Small	800 x 600 x 780	780 x 580 x 760	343
Large	1100 x 900 x 1020	1080 x 880 x 1000	950

48 Hour Test Results



Insulation

Nominal thickness - 4mm

Foil Thickness - 8MY + 25MY PE

Density - 200 gr/m² (±5%)

Flame Resistance - B2

Anti-corrosion coating - NC lacquer



Temperature Controlled Packaging, Unit C-D Haslemere Industrial Estate, Tomlinson Road, Leyland, Preston, PR25 2DY UK

Email: info@tcpkg.co.uk Telephone: 01772 331789